

HedgeCo.Net Hedge Fund Aggregate Index

HCN Hedge Fund Aggregate Index -March 2012 Report



Year	Jan	Feb	Mar	Apr	May	Jun	Jul	Aug	Sep	Oct	Nov	Dec	YTD	S&P 500
2012	2.52%	1.66%	0.13%	-	-	-	-	-	-	-	-	-	4.37%	12.58%
2011	0.32%	1.52%	0.29%	1.93%	(1.03%)	(1.04%)	0.39%	(2.12%)	(2.89%)	2.22%	(0.94%)	(0.36%)	(1.82%)	2.11%
2010	(0.76%)	0.98%	2.44%	1.54%	(2.87%)	(0.18%)	1.42%	0.38%	3.27%	2.39%	0.47%	3.44%	13.06%	15.07%
2009	0.42%	(1.00%)	1.51%	3.48%	5.17%	0.50%	1.77%	1.46%	2.74%	(0.67%)	1.91%	0.83%	19.51%	26.46%
2008	(2.10%)	2.38%	(1.60%)	1.52%	2.26%	(0.14%)	(1.78%)	(1.02%)	(5.05%)	(5.31%)	(1.47%)	0.24%	(11.73%)	(37.00%)
2007	1.39%	0.68%	0.87%	2.02%	2.34%	1.02%	0.46%	(0.81%)	3.15%	3.45%	(1.07%)	1.12%	15.52%	5.49%

Performance Statistics

	HCN-THF	S&P500
Average Annual Return	7.41%	3.77%
Average Monthly Return	0.57%	0.31%
Average Monthly Gain	1.67%	3.87%
Highest Monthly Return	5.17%	10.93%
Lowest Monthly Return	(5.31%)	(16.79%)
Previous 12 Months	0.32%	8.53%
Previous 36 Months	37.21%	87.99%
Annualized Standard Deviation	6.87%	18.65%
Compounded Rate of Return	0.55%	0.17%
Annualized Compounded Rate of Return	6.79%	2.04%
Cumulative Return	41.19%	11.19%
Profitable Percentage	66.67%	58.73%
Max Drawdown	(14.30%)	(50.95%)

Quantitative Statistics

	HCN-THF	S&P500
Annualized Return	6.79%	2.04%
Annualized Standard Deviation	6.87%	18.65%
Annualized Sharpe Ratio (0%)	0.99	0.20
Annualized Sharpe Ratio (5%)	0.28	(0.06)
Annualized Sharpe Ratio (10%)	(0.40)	(0.31)
Annualized Sortino Ratio (0%)	1.55	0.15
Annualized Sortino Ratio (5%)	0.35	(0.20)
Annualized Sortino Ratio (10%)	(0.53)	(0.50)
Ann. Downside Deviation (10%)	1.62%	4.33%

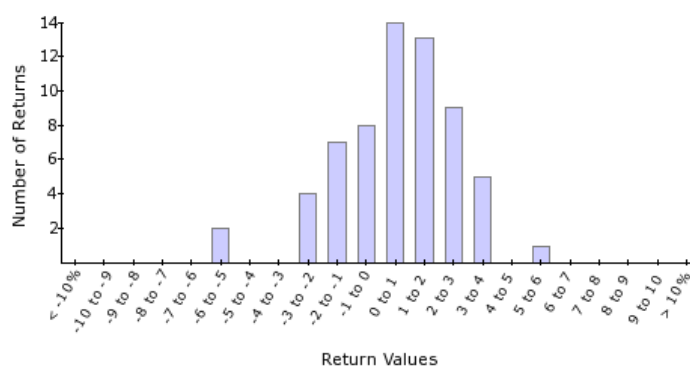
Correlation to Benchmarks

	S&P500
Alpha (annualized)	0.48
Beta	0.29
R ²	0.61

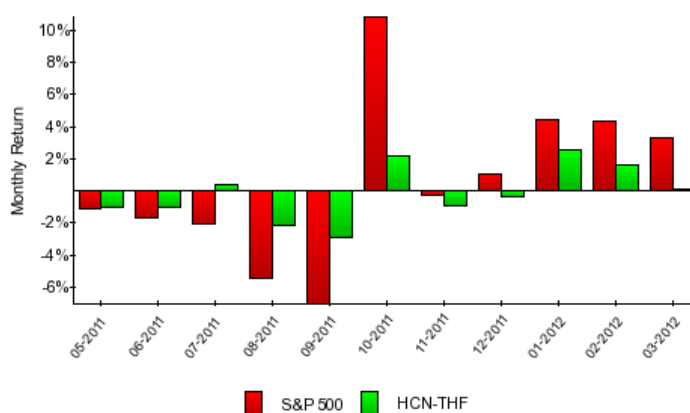
Drawdown Analysis

Depth	Length of Drawdown	Months to Recover	Start	End
(14.30%)	9 months	7 months	06-2008	09-2009
(6.53%)	11 months	0 months	04-2011	
(3.04%)	2 months	3 months	05-2010	09-2010

Distribution of Returns



Rolling 12 Month Performance



NAV Growth Since Index Inception

